

# JUNO LEARNING ONLINE CPD SERIES

## AI FOR IN-HOUSE LAWYERS



TUESDAY 22 AUGUST, 12 - 1 PM



**Mariette van Niekerk**

Associate Director - Risk & AI, Deloitte



**Matt Farrington**

Juno Technology Consultant

# Agenda

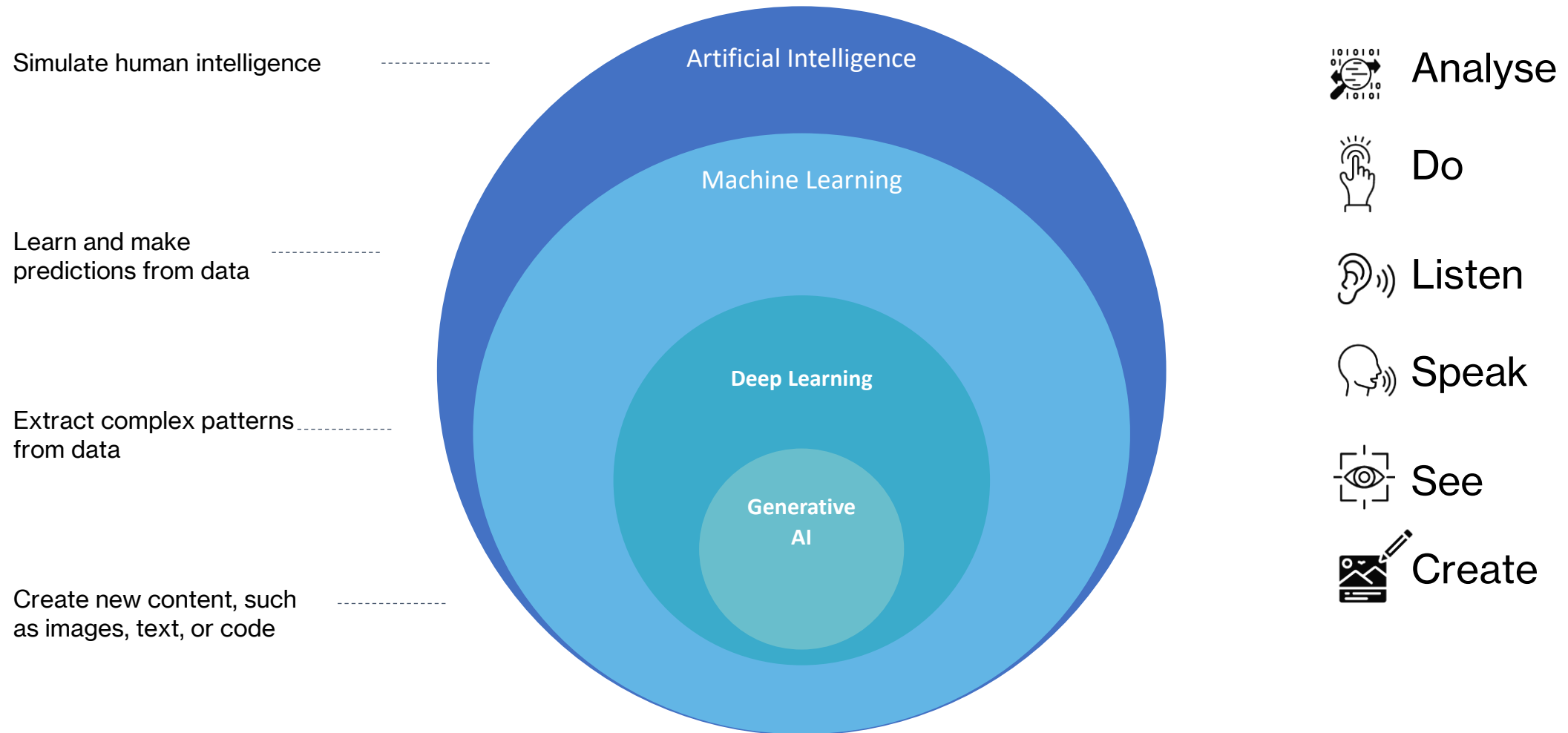
- What is AI?
- Why should I care?
- How can I use AI safely?
- ChatGPT prompting
- Further guidance



# What is AI?

# So what is AI?

Computer systems performing tasks typical of *human* intelligence



# Generative AI

Generative AI... tools use large amounts of information (including personal information) to transform and generate a variety of content, including human-like conversations, writing essays, creating images or videos, and computer code.

**- NZ Privacy Commission**

# ChatGPT

GPT	“Generative Pretrained Transformer”, a large language model (LLM)
ChatGPT	An application that uses GPT (plus other AI tools) using a chat-based user interface
OpenAI	A company developing AI tools, including GPT, ChatGPT (plus others)



# What LLMs are good at

## Generation

Being able to generate original and coherent text

## Summarization

Summarize a piece of text by prompting it with a few examples of a full document and its summary

## Rewriting/Rephrasing

Paraphrasing, correcting the spelling and grammar in voice-to-text transcriptions

## Extraction

Take a long piece of text and extract only the key information or words from the text

## Search/Similarity

Making sense of existing text. Given a text query, the goal is to find documents that are most similar to the query

## Classification

Take a group of documents and make sense of how they are organized and how they are related to each other

## Embeddings

Extract semantic information from text input in the form of vectors of floats

## Clustering

Take a group of documents and make sense of how they are organized and how they are related

# Not all AI is generative

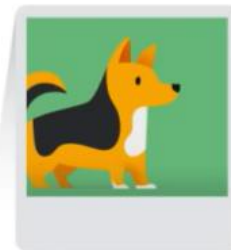
- Classifiers
- Technology Assisted Review
- Named Entity Recognition
- Computer Vision
- Automated Contract Analysis
- And not all GenAI / LLMs are ChatGPT



# Generative AI vs (Discriminative) Deep Learning

Both deal well with unstructured data sources, so how are they different?

Discriminative technique



Classify

Discriminative model  
(classify as a dog or a cat)

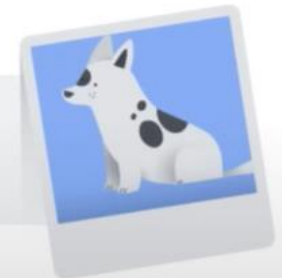


Generative technique



Generate

Generative model  
(generate dog image)





**Why should  
I care?**

**AI will not replace humans,  
but humans that use AI will replace those that do not**

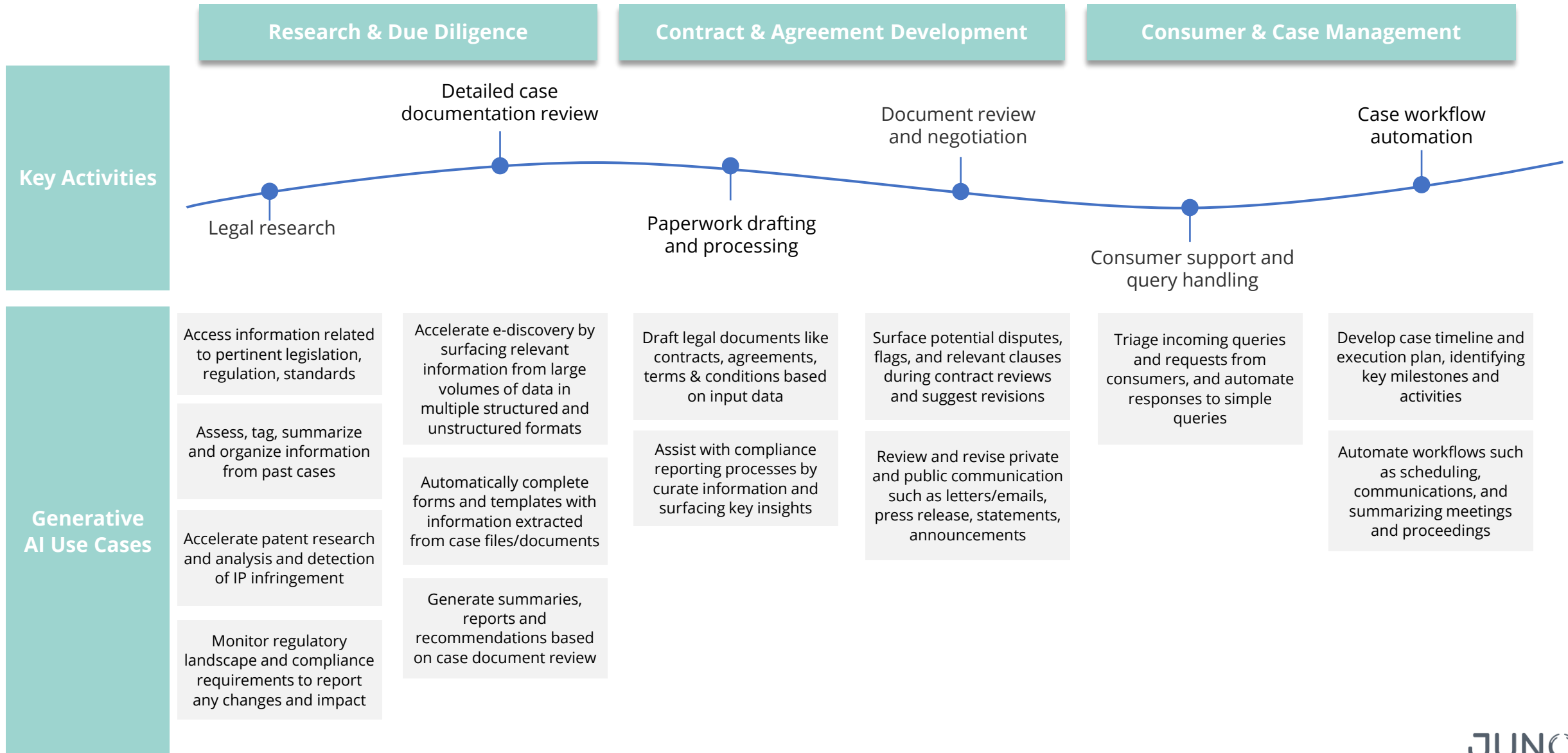


# Legal use cases

## *...and how GenAI has evolved them*

- Document Classification  
(Remediation)
- Technology Assisted Review  
(Litigation)
- Contract review
- Contract database review

# Legal & Regulatory





# How can I use AI safely?

# What can go wrong with AI?

## Tay, Microsoft's AI chatbot, gets a crash course in racism from Twitter

Attempt to engage millennials with artificial intelligence backfires hours after launch, with TayTweets account citing Hitler and supporting Donald Trump



## AI NEWS



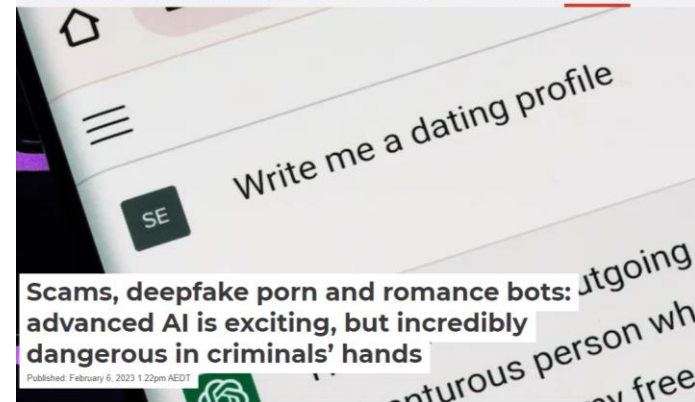
Medical chatbot using OpenAI's GPT-3 told a fake patient to kill themselves



## THE CONVERSATION

Academic rigour, journalistic fair

Arts + Culture Books + Ideas Business + Economy Education Environment + Energy Health Politics + Society Science + Tech



Scams, deepfake porn and romance bots: Outgoing advanced AI is exciting, but incredibly dangerous in criminals' hands

Published: February 6, 2023 1:22pm AEDT

## Meta AI Bot Contributed to Fake Research and Nonsense Before Being Pulled Offline

Share



Nikki Main

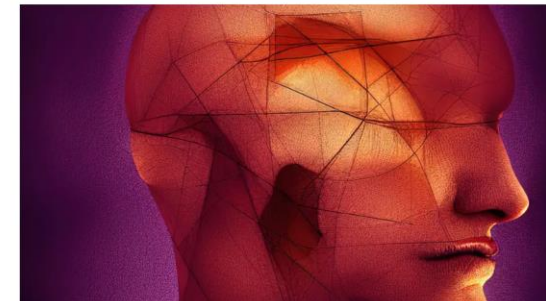
Published 4 months ago: November 23, 2022 at 8:25 am - Filed to: ACADEMICDISCIPLINES



## AI Image Generators Routinely Display Gender and Cultural Bias

One researcher's simple tool shows how Stable Diffusion depicts stereotypes such as all-male engineers and 'modest'

By Kyle Barr | Published November 1, 2022 | Comments (20) | Alerts

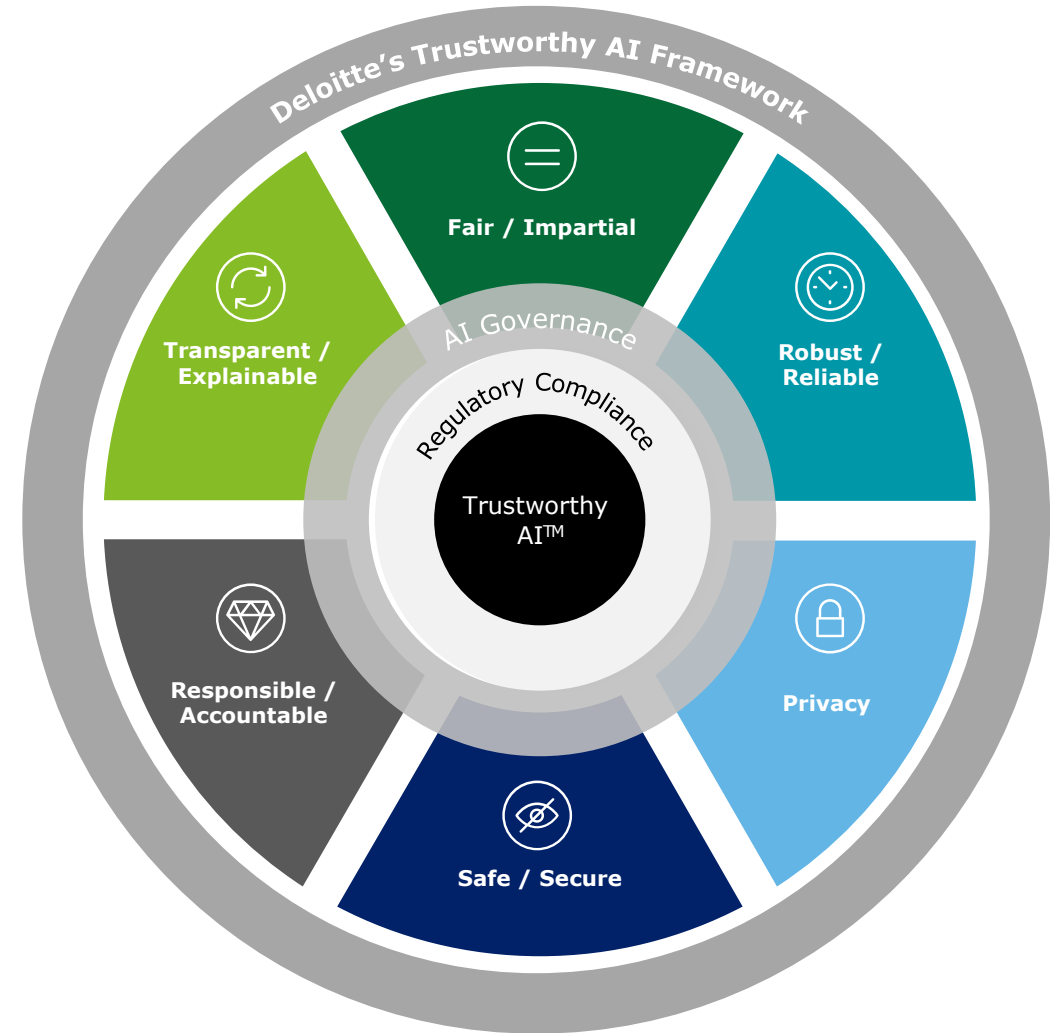


# Trustworthy AI

Trustworthy AI is a socio-technical ecosystem that is ethical, lawful and technically robust.

It is achieved through governance and management of AI risks across people, processes and technology.

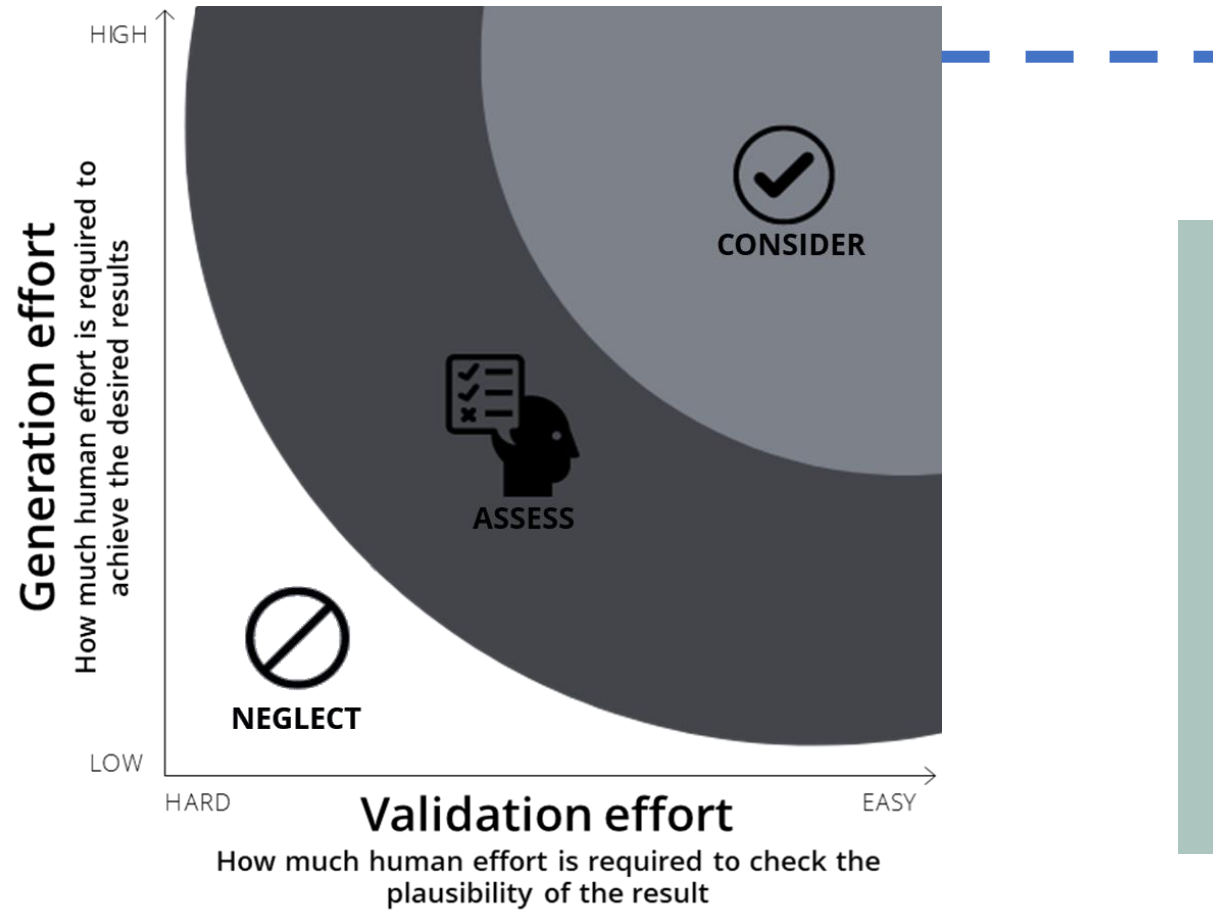
Can Generative AI be Trustworthy?





# Where organisations are having initial wins with Generative AI

Where human effort is high and validation easy. Higher ROI when horizontal use cases can be identified.



## Working with AI: Easy first wins

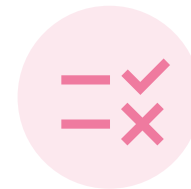
- Draft customised communication
- Process documents (first pass)
- Provide customer service prompts
- Aid research and summarisation

# Key Risks – Generative AI



## Risks

With any technology, generative AI can pose certain risks to be aware of



Inaccuracy



Bias



IP Violation



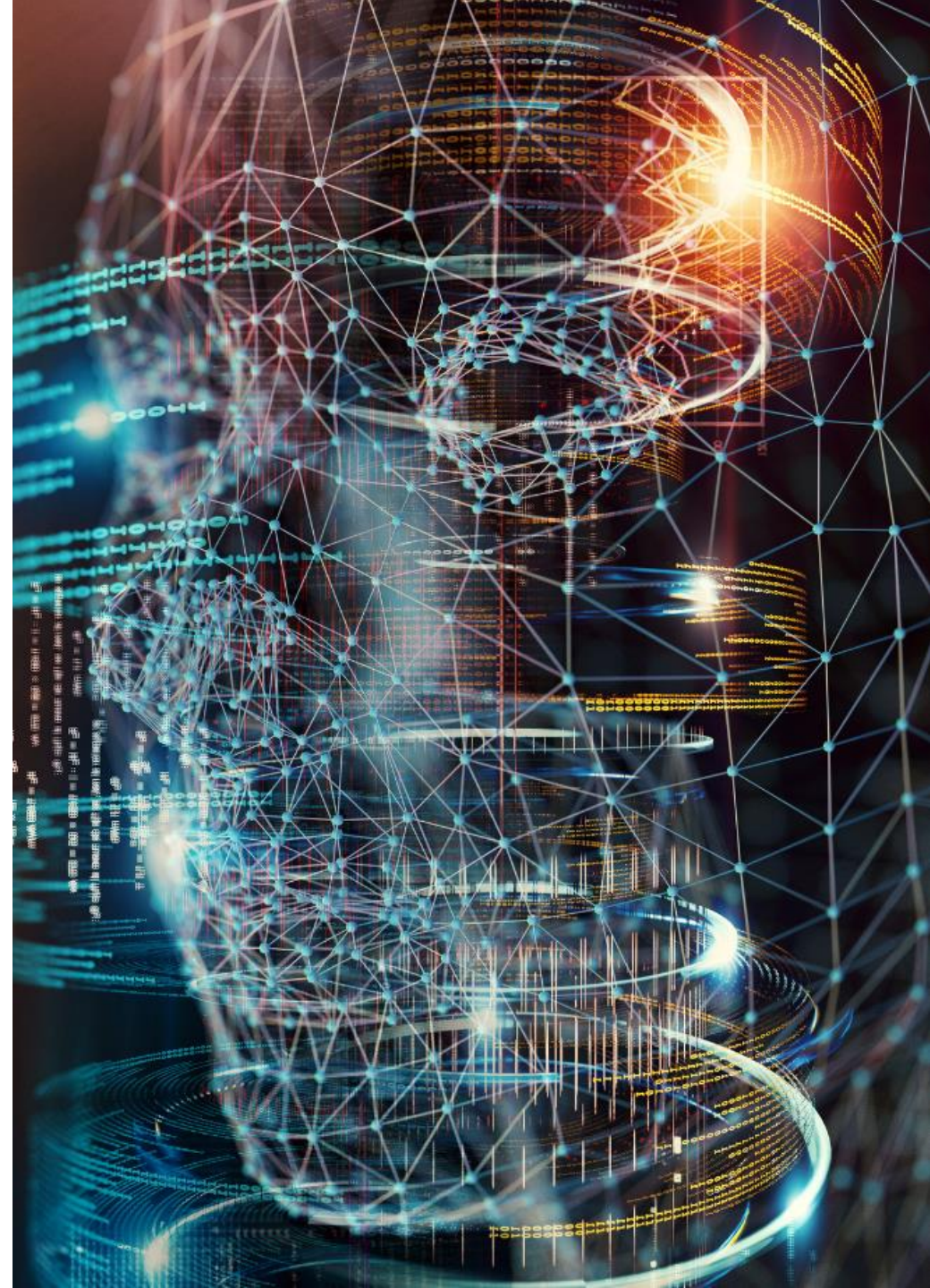
Privacy



Unethical  
Use

# Legal impacts

- Legal advice
- Regulation
- Practice of law





# Using ChatGPT in-house

# ChatGPT is bad at

- Research
- Expert advice
- Maths
- Legal document generation

# ChatGPT is good at

- Language
- Summarise this text
- Expand these points into formal text
- Prepare a first draft of...
- Explain this to a...

# ChatGPT in-house safety

1. Paid versus free
2. Be mindful of the “context window”
3. Have a conversation in an area of expertise
4. Tell ChatGPT about yourself
5. Tell ChatGPT about the sort of answer you want
6. Reflection and inputs
7. Scaffold up
8. To a limit
9. Quasi legal, intersections and analogies





# Further guidance



# Key takeaways

- AI is not monolithic; different AI tools (and providers) present different issues.
- AI presents legal issues, but not all AI legal issues have legal solutions.
- Things are changing fast.
- You (probably) aren't being replaced by AI anytime soon. But you might be supplanted by a lawyer using AI better than you.
- AI is very good at the mundane; the (safe) use of AI can make the practice of law more efficient, effective and enjoyable.

# Guidance and resources

- [Government Use of Artificial Intelligence in New Zealand: Final Report](#)
- [On the Dangers of Stochastic Parrots: Can Language Models Be Too Big?](#) (but also search for the follow-up and fallout from this article).
- [A new vision of artificial intelligence for the people](#)
- [Does GPT-2 Know Your Phone Number?](#)
- Privacy Commission [Generative Artificial Intelligence update](#)
- Digital.govt.nz [Interim Generative AI guidance for the public service](#)